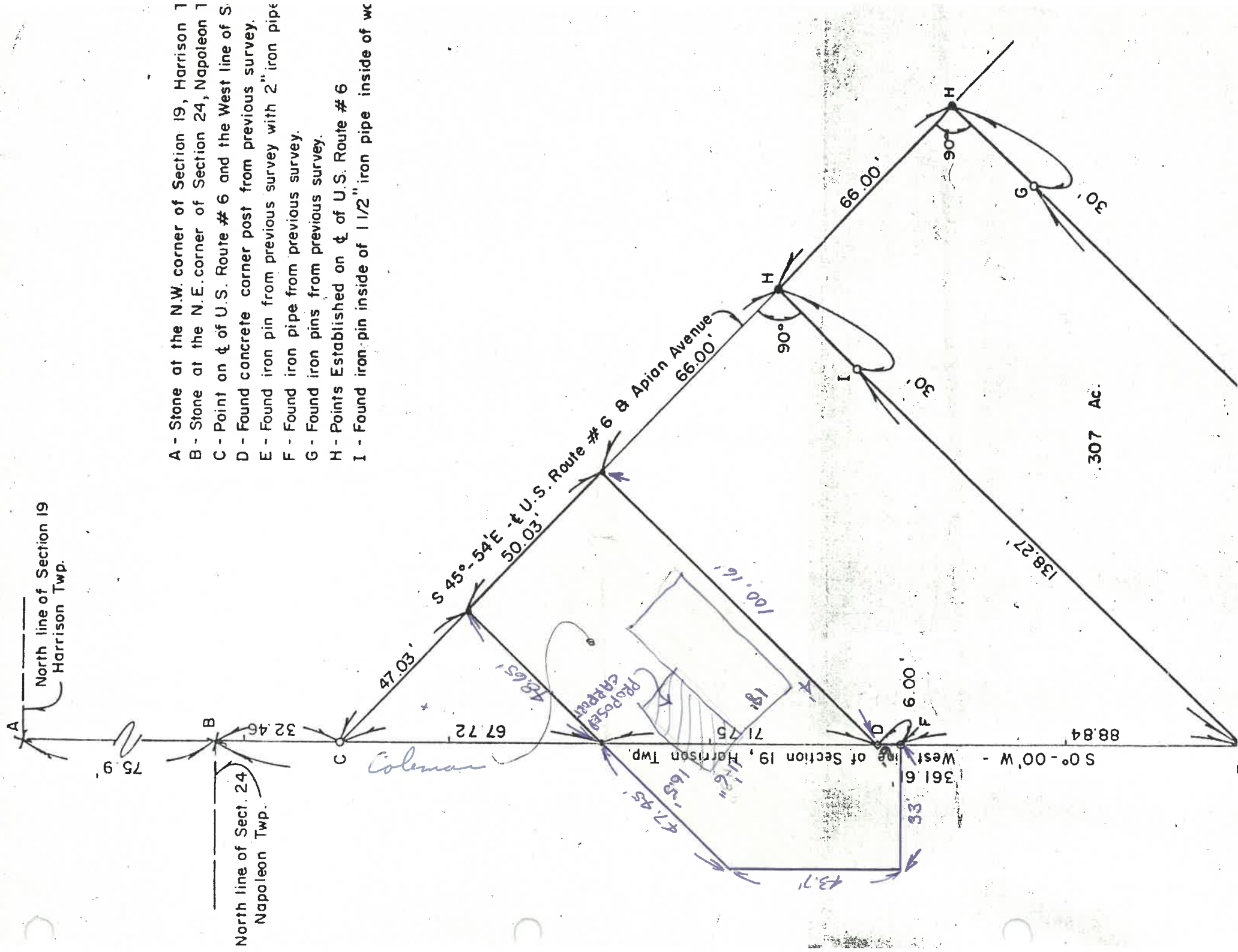


SURVEY IN THE WEST PART OF THE NORTHWEST 1/4 OF SECTION
TOWN 5 NORTH, RANGE 7 EAST, HARRISON TOWNSHIP, HENRY COU
OHIO



- A - Stone at the N.W. corner of Section 19, Harrison Twp.
- B - Stone at the N.E. corner of Section 24, Napoleon Twp.
- C - Point on ϕ of U.S. Route # 6 and the West line of S
- D - Found concrete corner post from previous survey.
- E - Found iron pin from previous survey with 2" iron pipe
- F - Found iron pipe from previous survey.
- G - Found iron pins from previous survey.
- H - Points Established on ϕ of U.S. Route # 6
- I - Found iron pin inside of 1 1/2" iron pipe inside of w

.307 AC.